

## LSD-SPO, BSD-SPO series

### Welded steel heavy-duty twin wheel castors, heavy-duty swivel head, with heavy-duty nylon wheels

1,350–3,600 kg

**Bracket:** LSD/BSL series

- particularly robust welded steel construction, zinc-plated, yellow-passivated, Cr6-free

Swivel bracket:

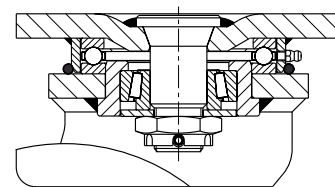
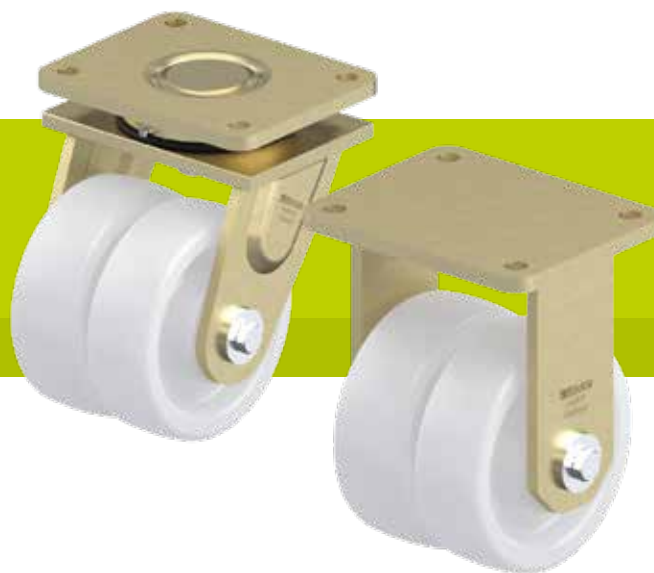
- axial grooved ball bearing ISO 104 and tapered roller bearing ISO 355 in the swivel head
- bolted and secured welded central kingpin, extremely strong
- dust and splash-proof
- grease nipple

**Wheel:** SPO series

- high-quality nylon 6, impact resistant, hardness 70 Shore D, extremely robust heavy-duty version, colour natural white

**Additional details:**

- bracket series: page 94
- brakes: page 112–113
- wheel series: page 355–356
- bearing types: page 84–85



Swivel castors	Fixed castors	Wheel Ø [mm]	Wheel width [mm]	Load capacity [kg]	Bearing type	Total height [mm]	Plate size [mm]	Bolt hole spacing [mm]	Bolt hole Ø [mm]	Offset swivel castor [mm]
LSD-SPO 127K	BSD-SPO 127K	125	2 x 50	1,350	ball bearing	185	175 x 140	140 x 105	14	50
LSD-SPO 150K-35	BSD-SPO 150K-35	150	2 x 50	1,450	ball bearing	215	175 x 140	140 x 105	14	55
LSD-SPO 160K-35	BSD-SPO 160K-35	160	2 x 50	1,550	ball bearing	220	175 x 140	140 x 105	14	55
LSD-SPO 200K-35	BSD-SPO 200K-35	200	2 x 50	2,700	ball bearing	260	175 x 140	140 x 105	14	60
LSD-SPO 250K	BSD-SPO 250K	250	2 x 65	3,600	ball bearing	330	255 x 200	210 x 160	18	70

Fixed castors: long side of plate parallel to the wheel axle

#### Versions / options



	with "Radstop" wheel brake	with "Radstop" wheel brake	with directional lock 4 x 90°	with directional lock 4 x 90° (inserted by hand)	with steel foot guard
Technical description page	113	113	115	115	116
Product code suffix	-RA	-RAH	-RI4	-RI4H	-FS
Available for	up to wheel Ø 200 mm upon request	wheel Ø 250 mm upon request	up to wheel Ø 200 mm upon request	wheel Ø 250 mm upon request	upon request